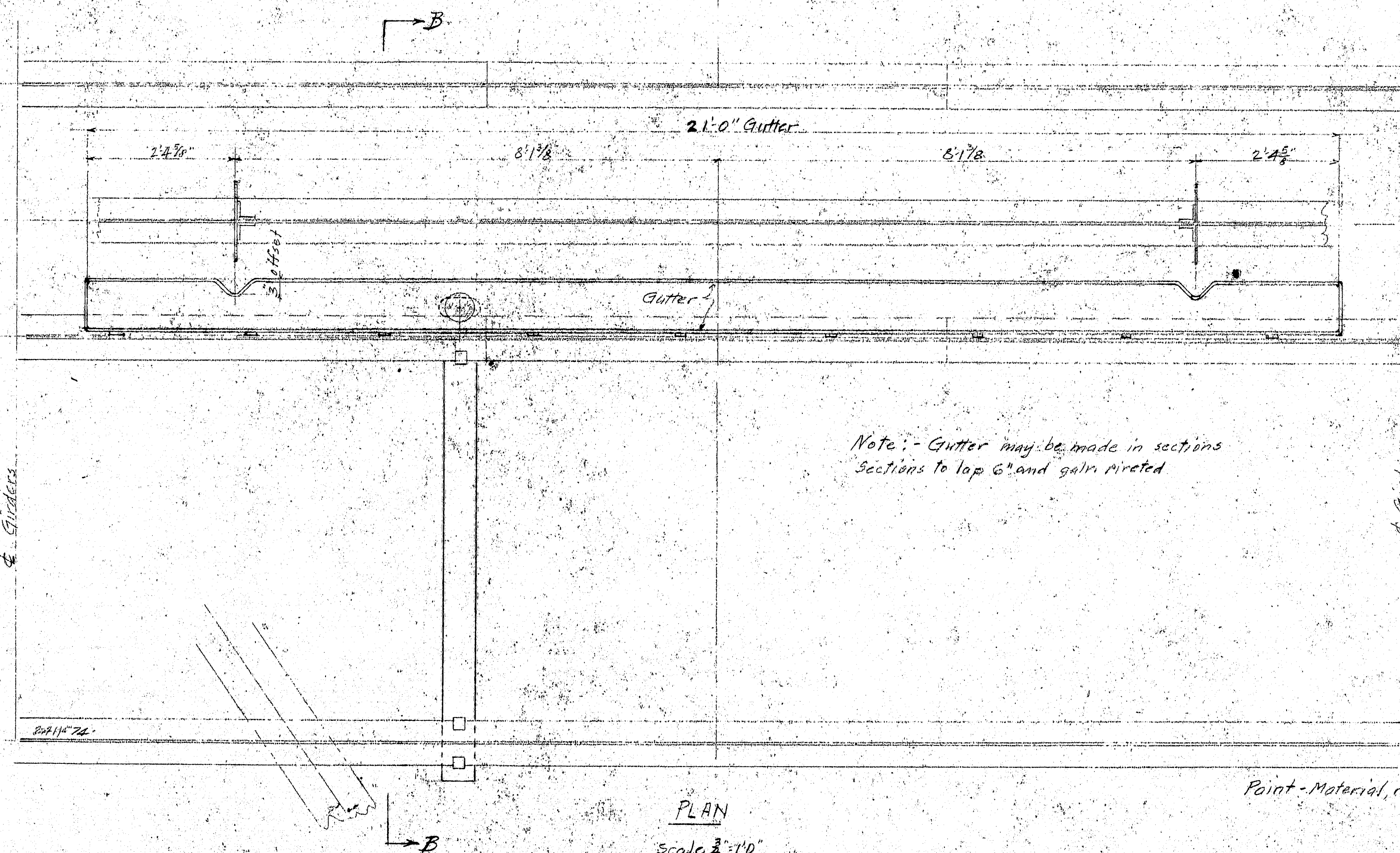
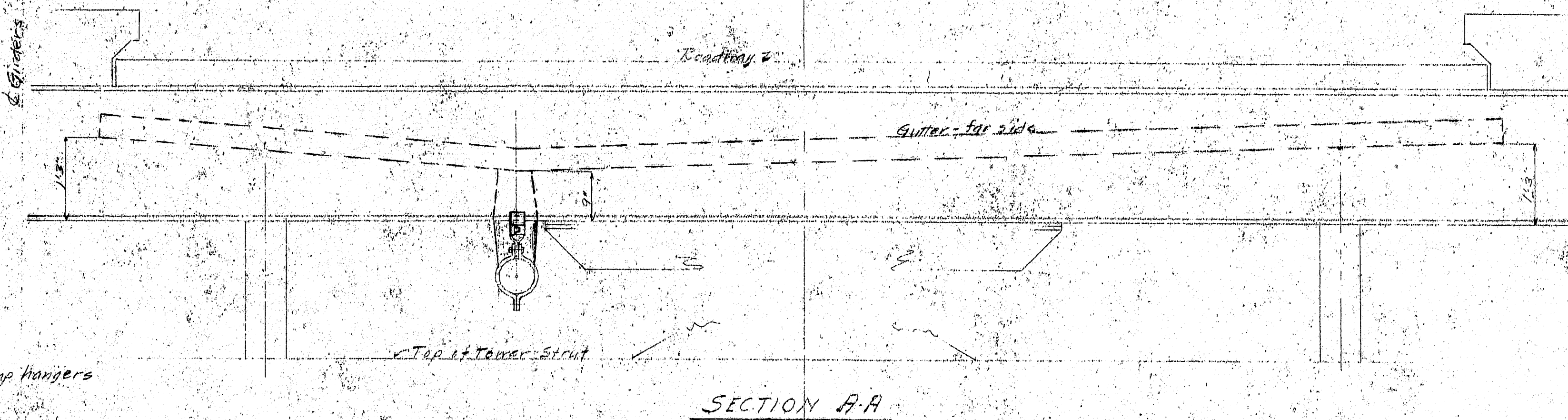


DETAIL OF END DAMS FOR 2'-3 1/4" OPENING IN ROADWAY. SEE DETAIL AT CABLE BENTS
Scale 1/2" = 1'-0"



Note: - Gutter may be made in sections
Sections to lap 6" and galv. riveted

Paint - Material, not galvanized, same as Bridge

REQUIRED
Gutter, run off pipe and
fittings as required for
expansion joint, at each
of two Main Towers

Revised 7-5-37 - Added detail of new end dams
for roadway expansion at Cable Bents.
10-9-39 - Revised as built.

P.W.A. PROJECT NO. ME1010 D
DEER ISLE-SEDGWICK BRIDGE DISTRICT
BRIDGE OVER EGGMOGAN REACH

DRAINAGE DETAILS
AT
MAIN TOWERS

ROBINSON AND STEINMAN
ENGINEERS
NEW YORK CITY

SCALES AS NOTED
DRAWING NUMBER
R53310-S127

12-4-33